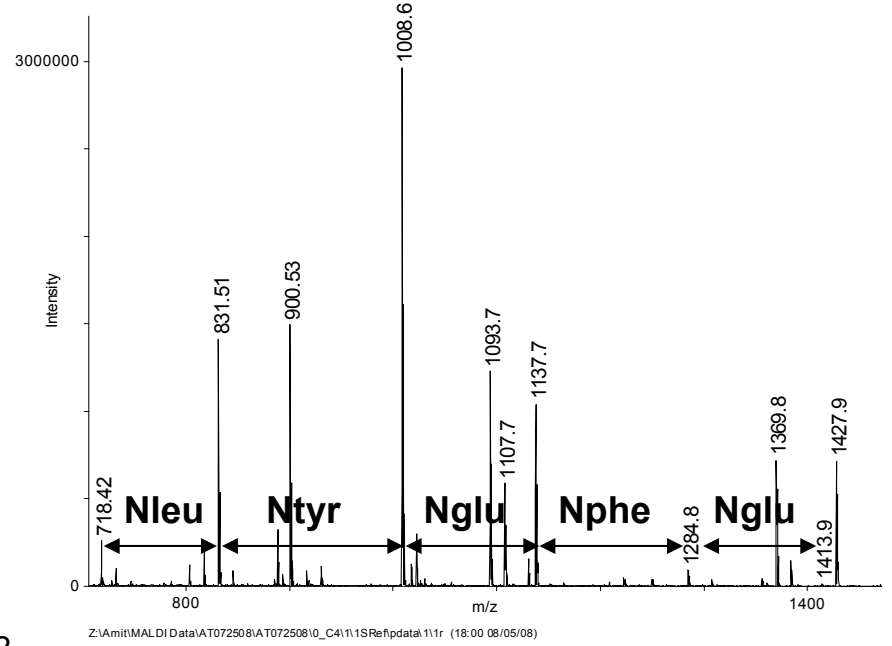
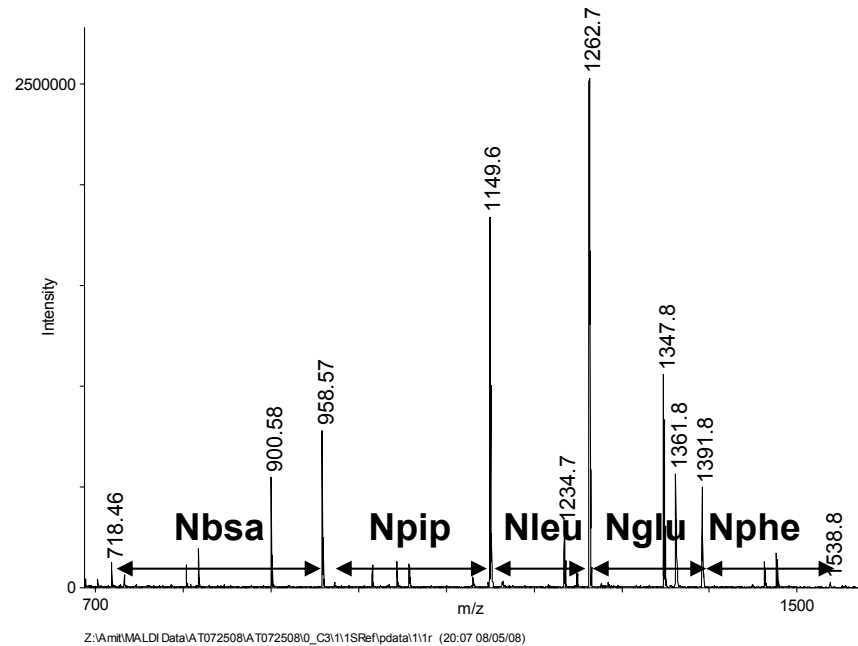
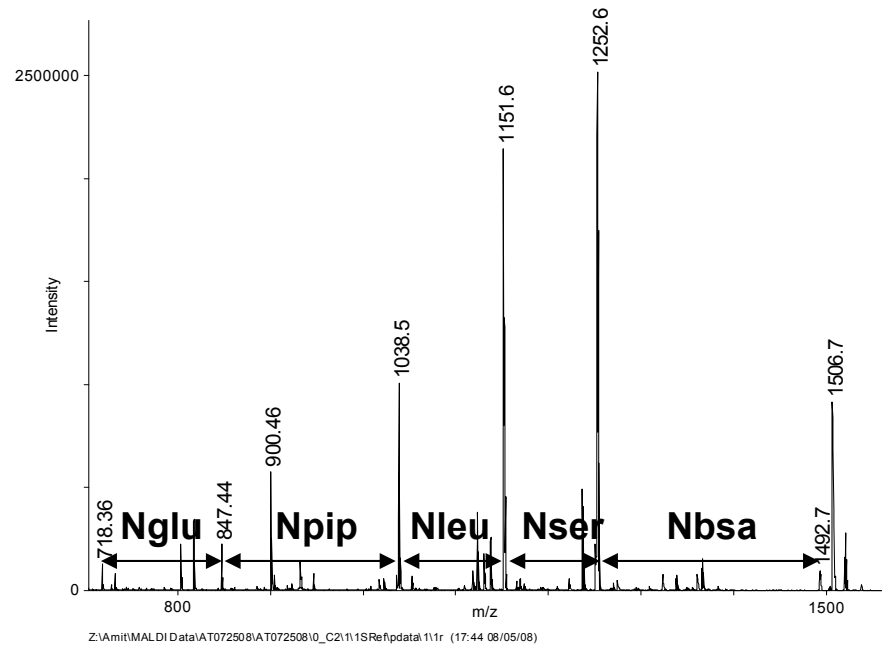
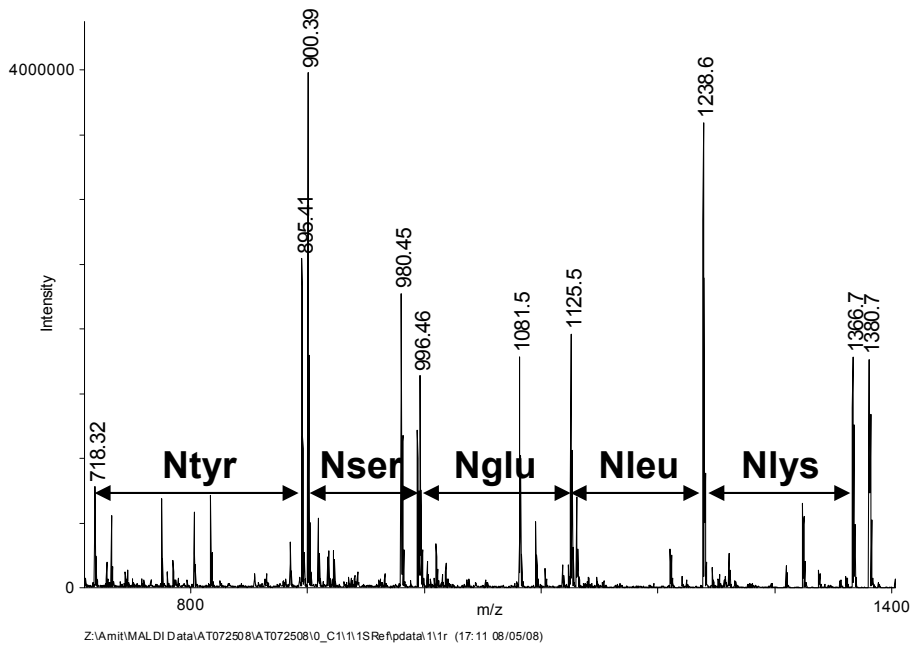


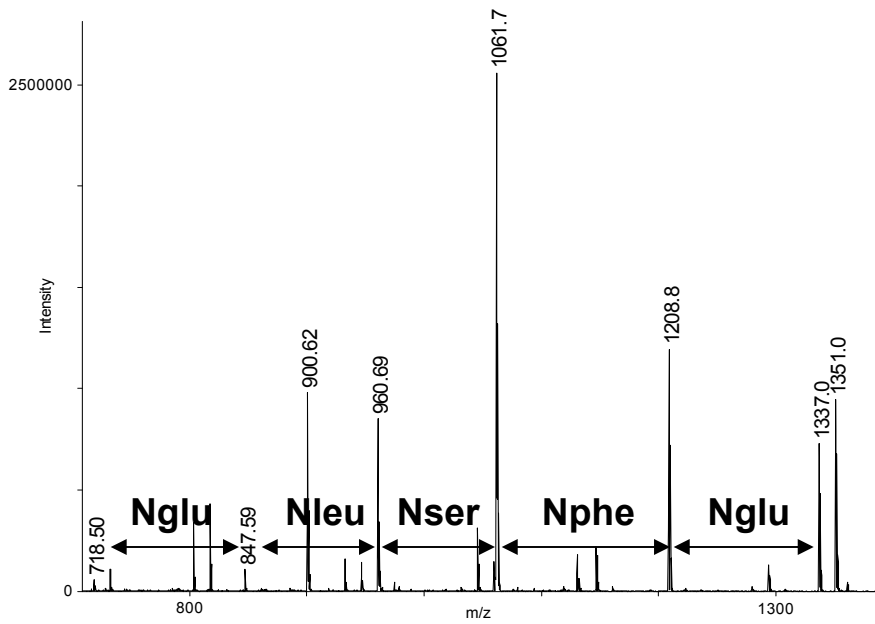
# High-Throughput Sequencing of Peptoids and Peptide-Peptoid Hybrids by Partial Edman Degradation and Mass Spectrometry

## (Supporting Information)

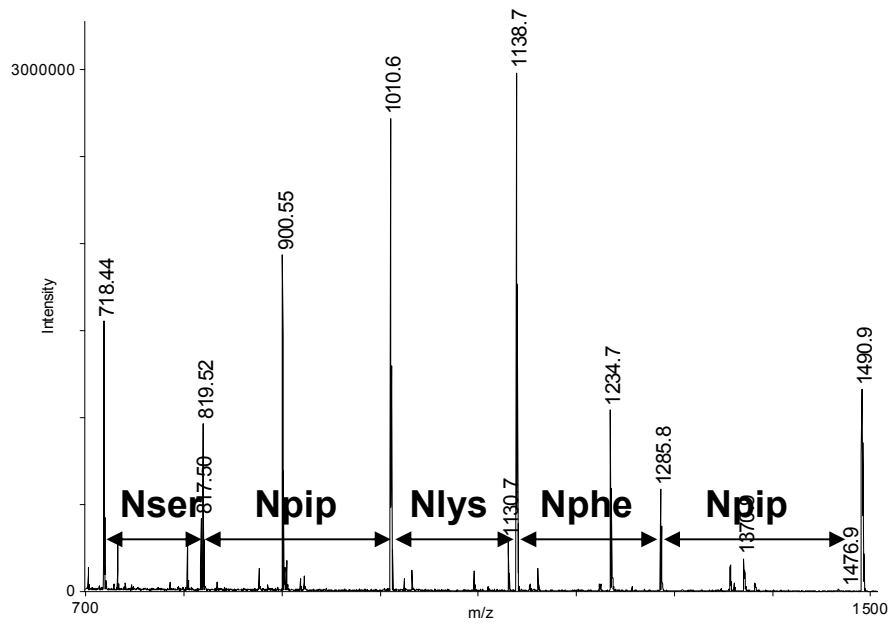
Amit Thakkar, Allison S. Cohen, Michael D. Connolly, Ronald N. Zuckermann, and  
Dehua Pei\*

**Figure S1.** MALDI-TOF MS spectra of 20 beads from peptoid library I, XXXXX(Nmeg)<sub>4</sub>RM-resin, synthesized on 90- $\mu$ m TentaGel S NH<sub>2</sub> resin (Trial #1 in Table 1). PED was performed at 1:3 PITC/Fmoc-Cl ratio.

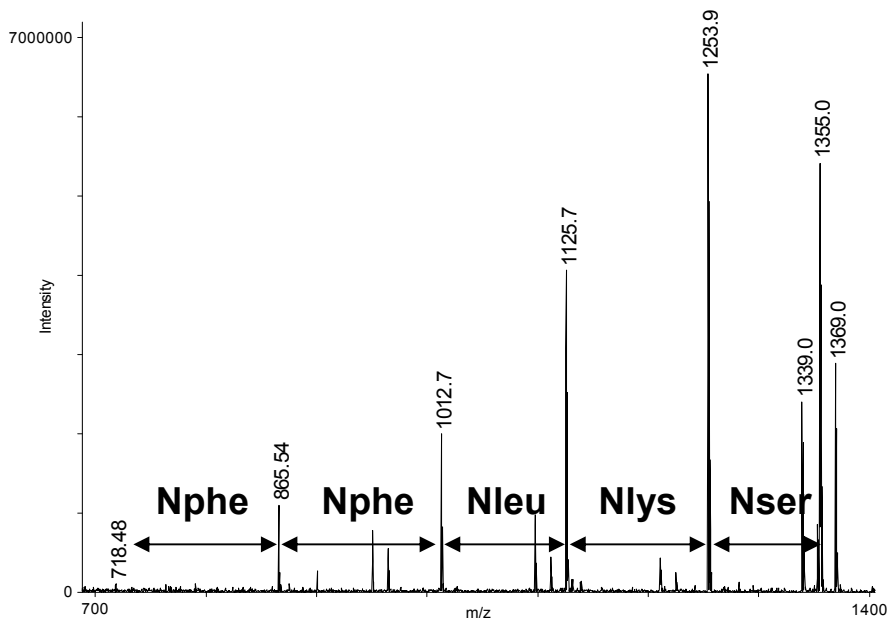




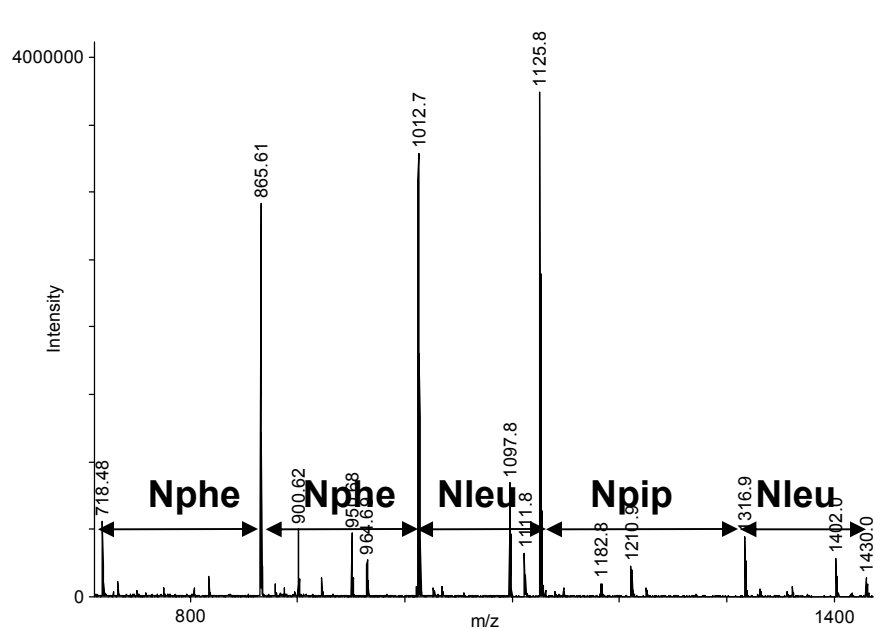
Z:\Amit\MALDI Data\AT072508\AT072508\0\_C5\11SRef\data1\11r (18:16 08/05/08)



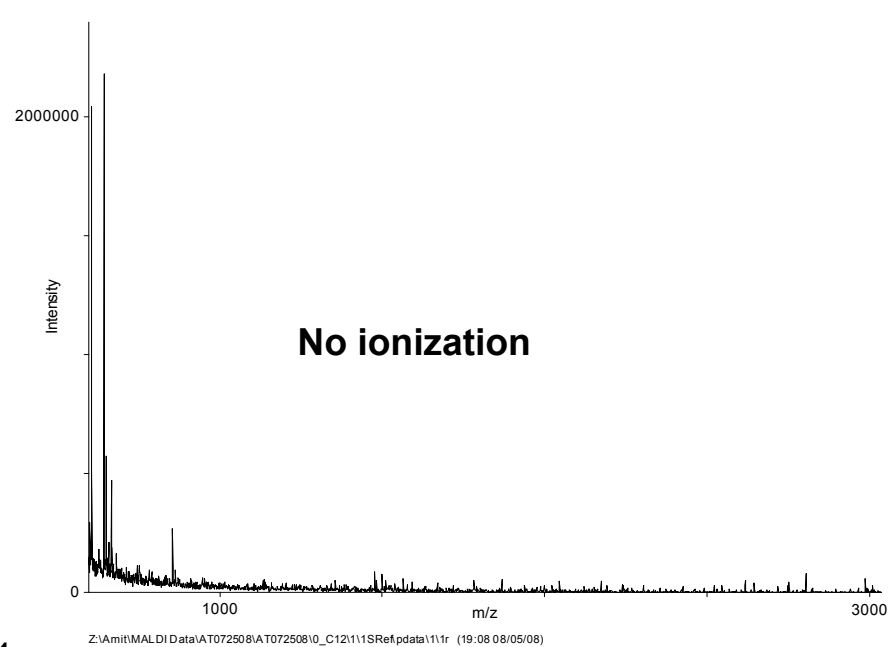
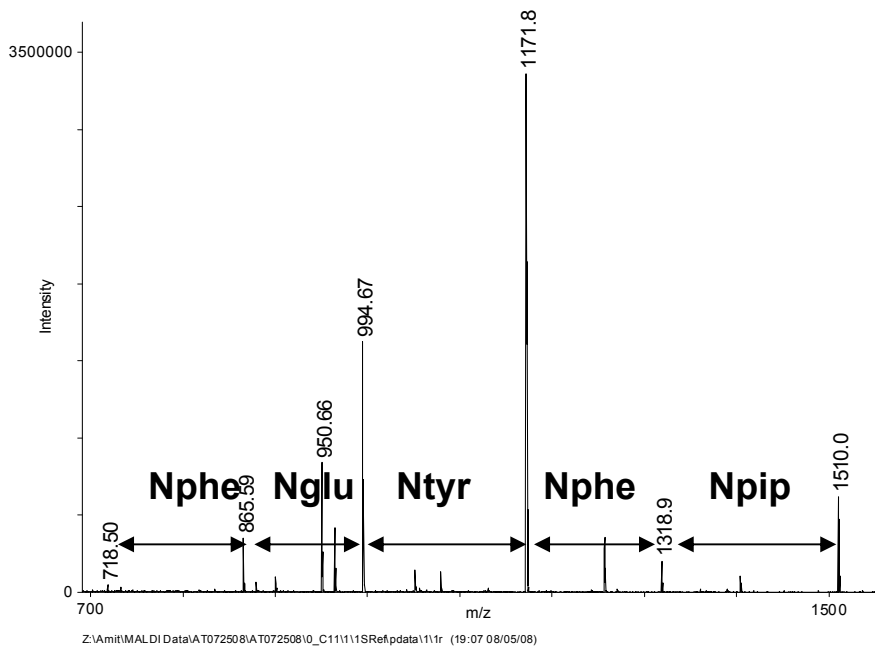
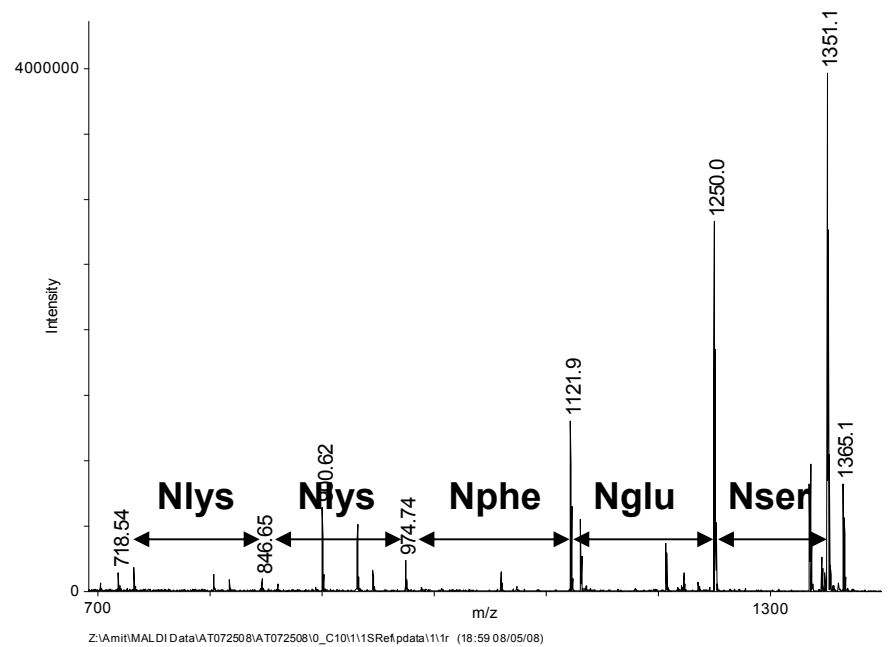
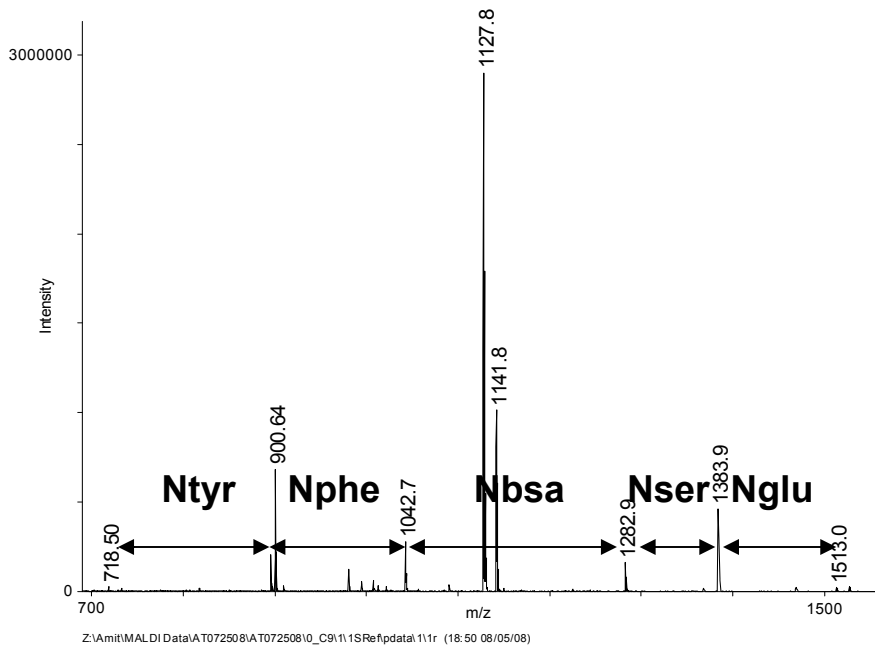
Z:\Amit\MALDI Data\AT072508\AT072508\0\_C6\11SRef\data1\11r (18:26 08/05/08)

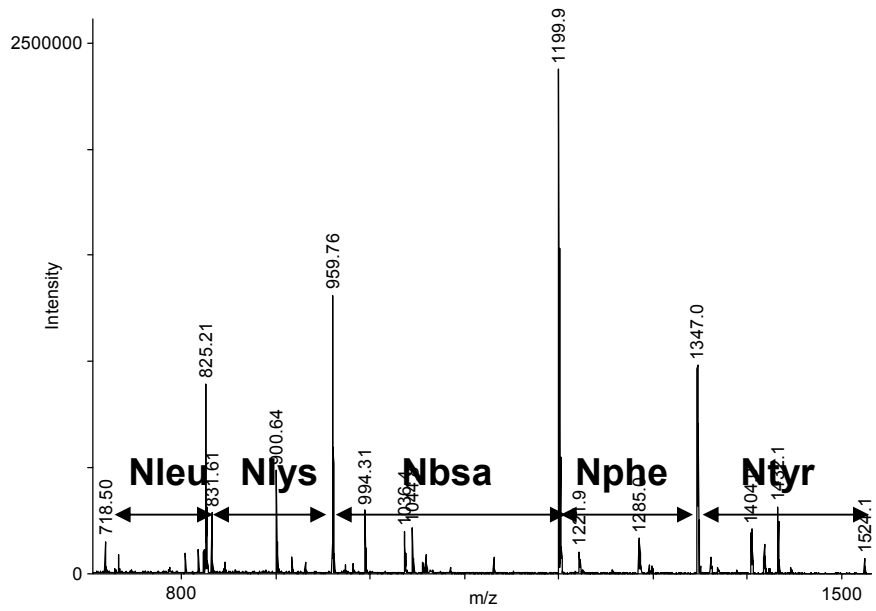


Z:\Amit\MALDI Data\AT072508\AT072508\0\_C7\11SRef\data1\11r (18:32 08/05/08)

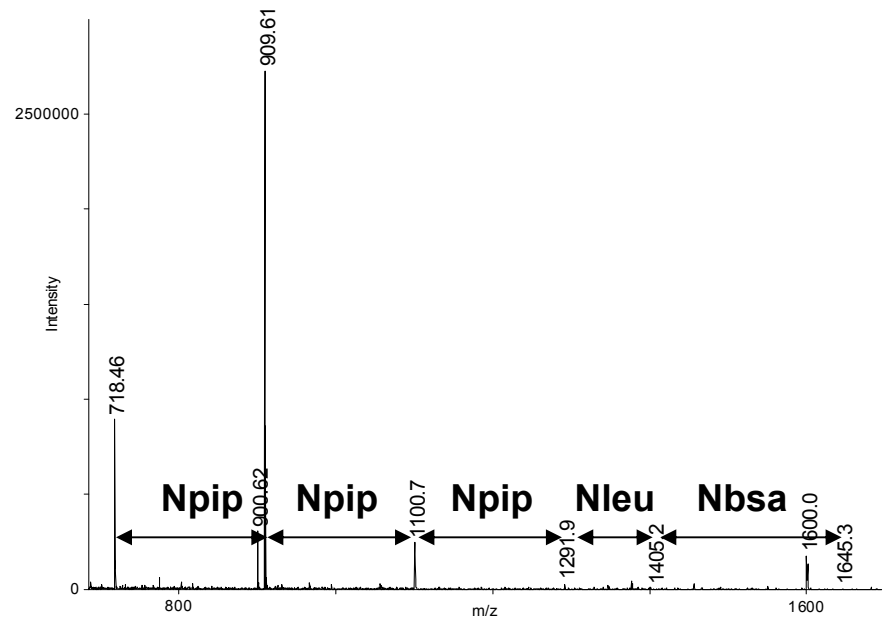


Z:\Amit\MALDI Data\AT072508\AT072508\0\_C8\11SRef\data1\11r (19:15 08/17/08)

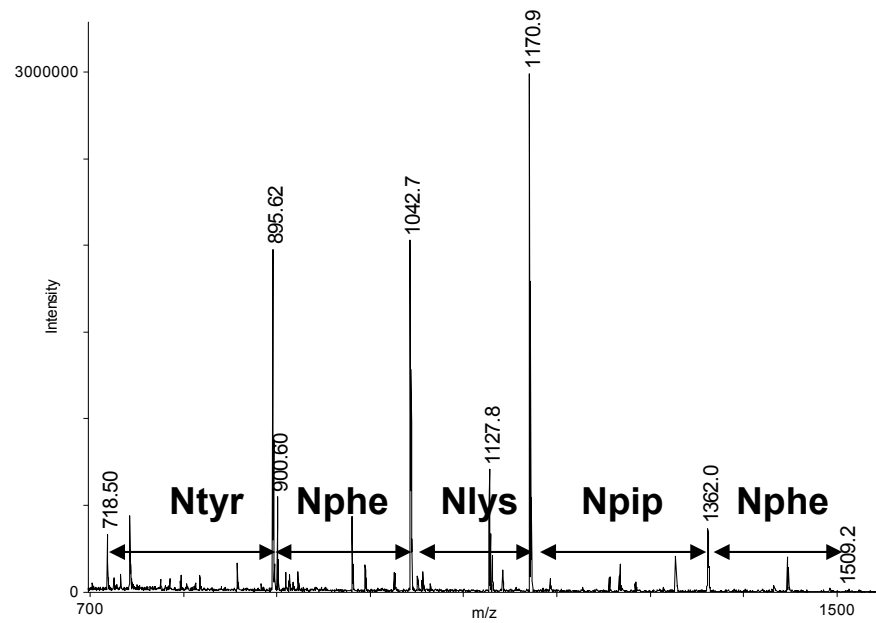




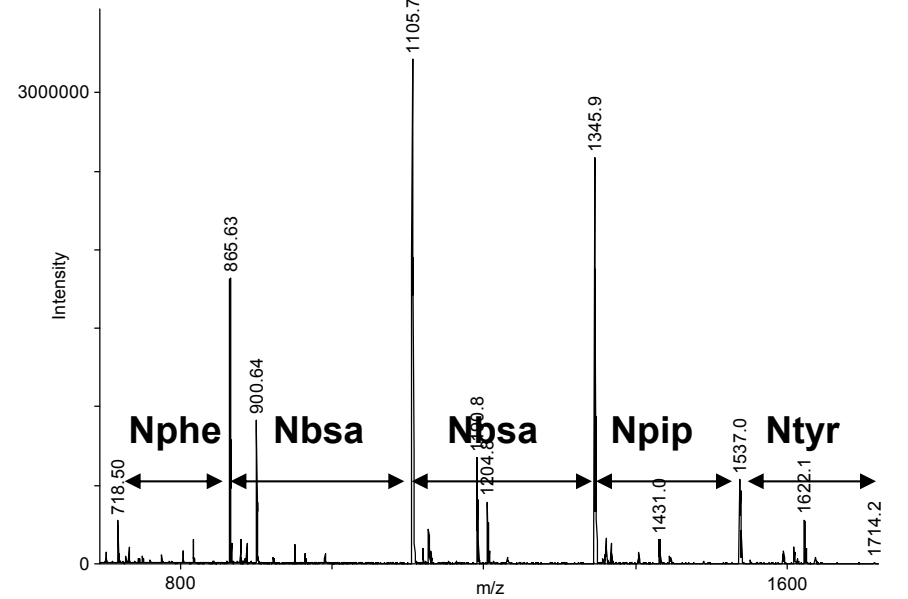
Z:\Amit\MALDI Data\AT072508\AT072508\0\_C13\11\1SRRef\data\11r (19:21 08/17/08)



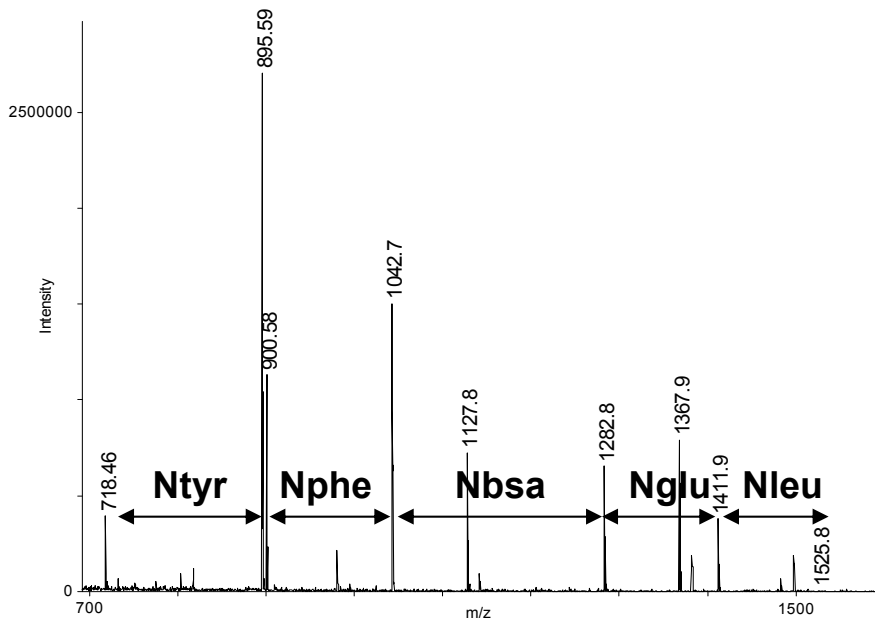
Z:\Amit\MALDI Data\AT072508\AT072508\0\_C14\11\1SRRef\data\11r (19:13 08/05/08)



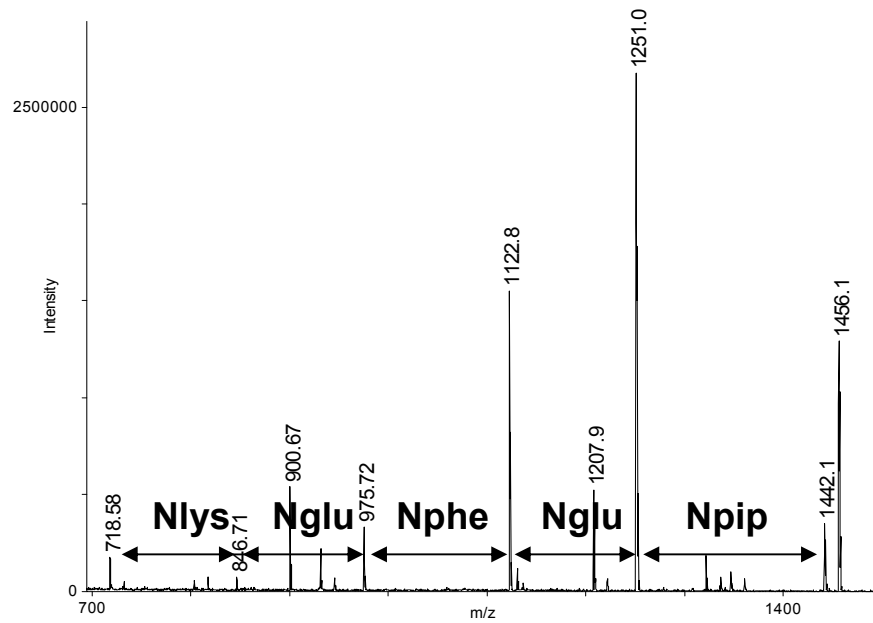
Z:\Amit\MALDI Data\AT072508\AT072508\0\_C15\11\1SRRef\data\11r (19:15 08/05/08)



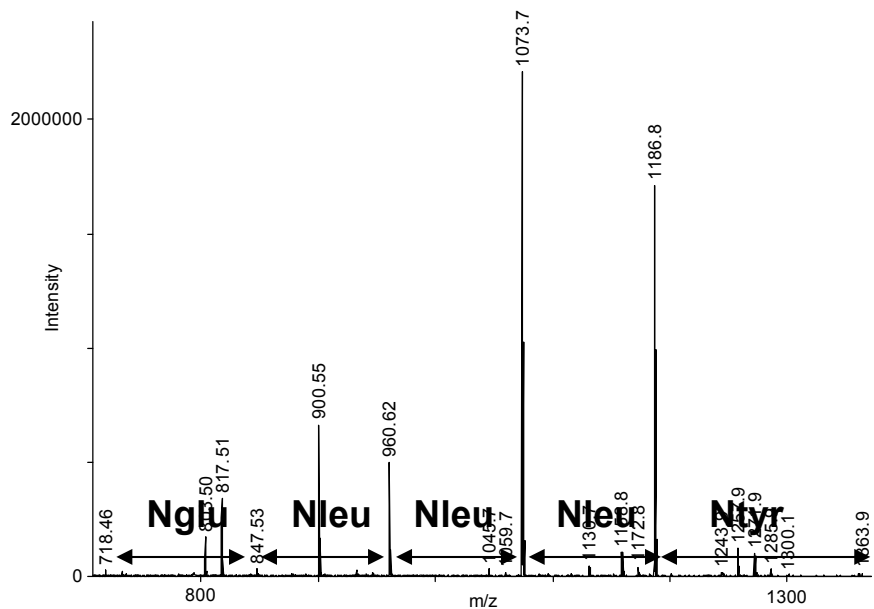
Z:\Amit\MALDI Data\AT072508\AT072508\0\_C16\11\1SRRef\data\11r (19:27 08/17/08)



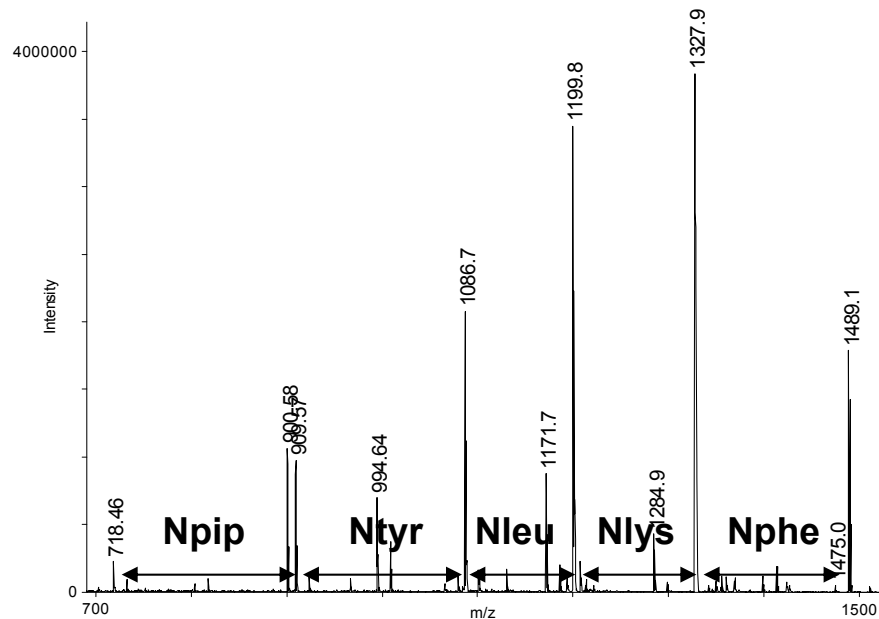
Z:\Amit\MALDI Data\AT072508\AT072508\0\_C17\11\1SRRef\data\11\1r (19:19 08/05/08)



Z:\Amit\MALDI Data\AT072508\AT072508\0\_C18\11\1SRRef\data\11\1r (19:20 08/05/08)



Z:\Amit\MALDI Data\AT072508\AT072508\0\_C19\11\1SRRef\data\11\1r (19:32 08/17/08)



Z:\Amit\MALDI Data\AT072508\AT072508\0\_C20\11\1SRRef\data\11\1r (19:23 08/05/08)

**Figure S2.** Representative MS spectrum of a known peptoid of the sequence Nphe-Nlys-Nglu-Nser-Nleu-LNBBRM\*. Peaks labeled with “a” represent  $m/z - 101$  peaks due to incomplete synthetic incorporation of Nser; “b” indicates  $m/z + 85$  peaks arising from peptoid synthesis; “c” indicates  $m/z + 14$  peaks arising from methylation. Synthesized on 90- $\mu\text{m}$  TentaGel S  $\text{NH}_2$  resin. PED was performed at 1:5 PITC/Fmoc-Cl ratio.

